



WORX RACING Sea-Doo GTR Rear Exhaust

PART # - WR04039

MODELS: Sea-Doo GTR MODELS

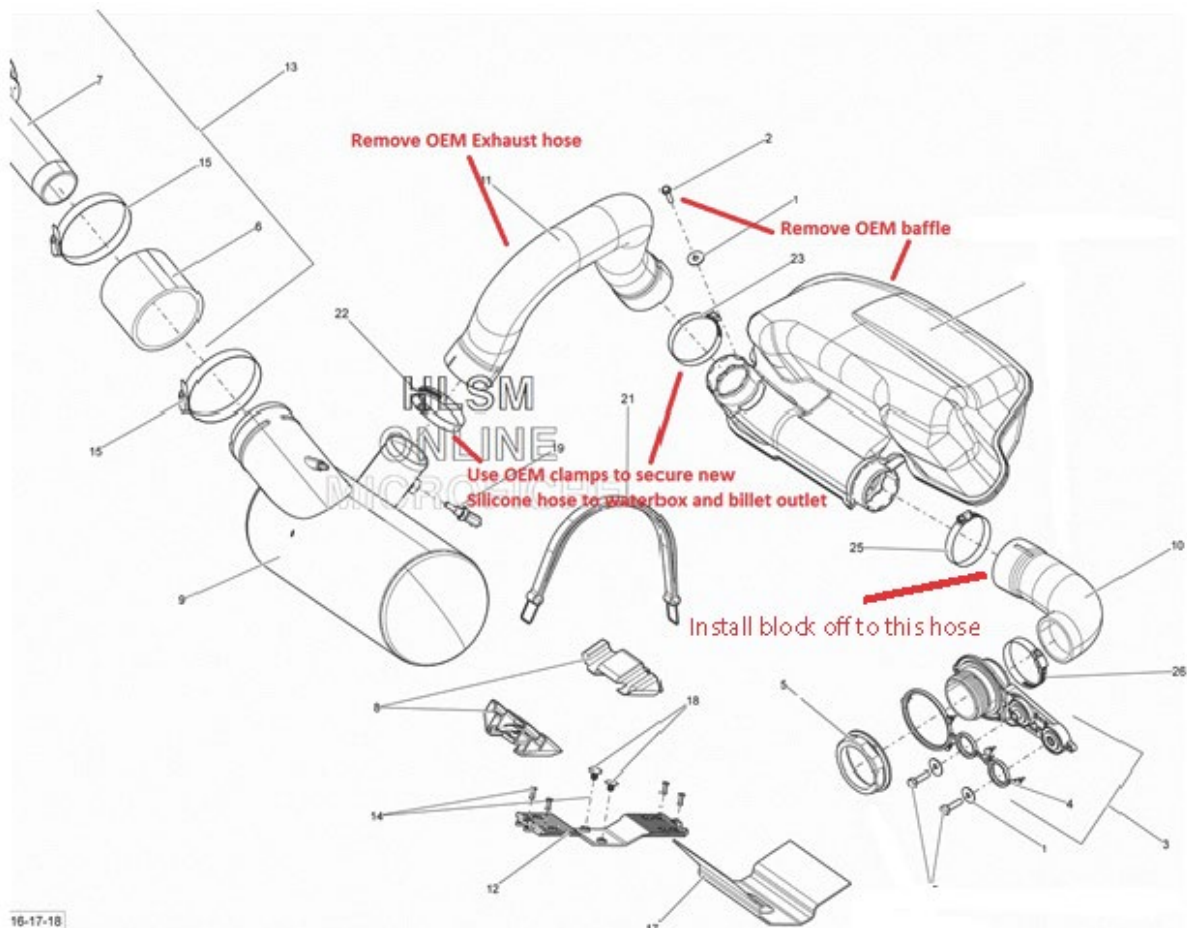
INSTALLATION INSTRUCTIONS

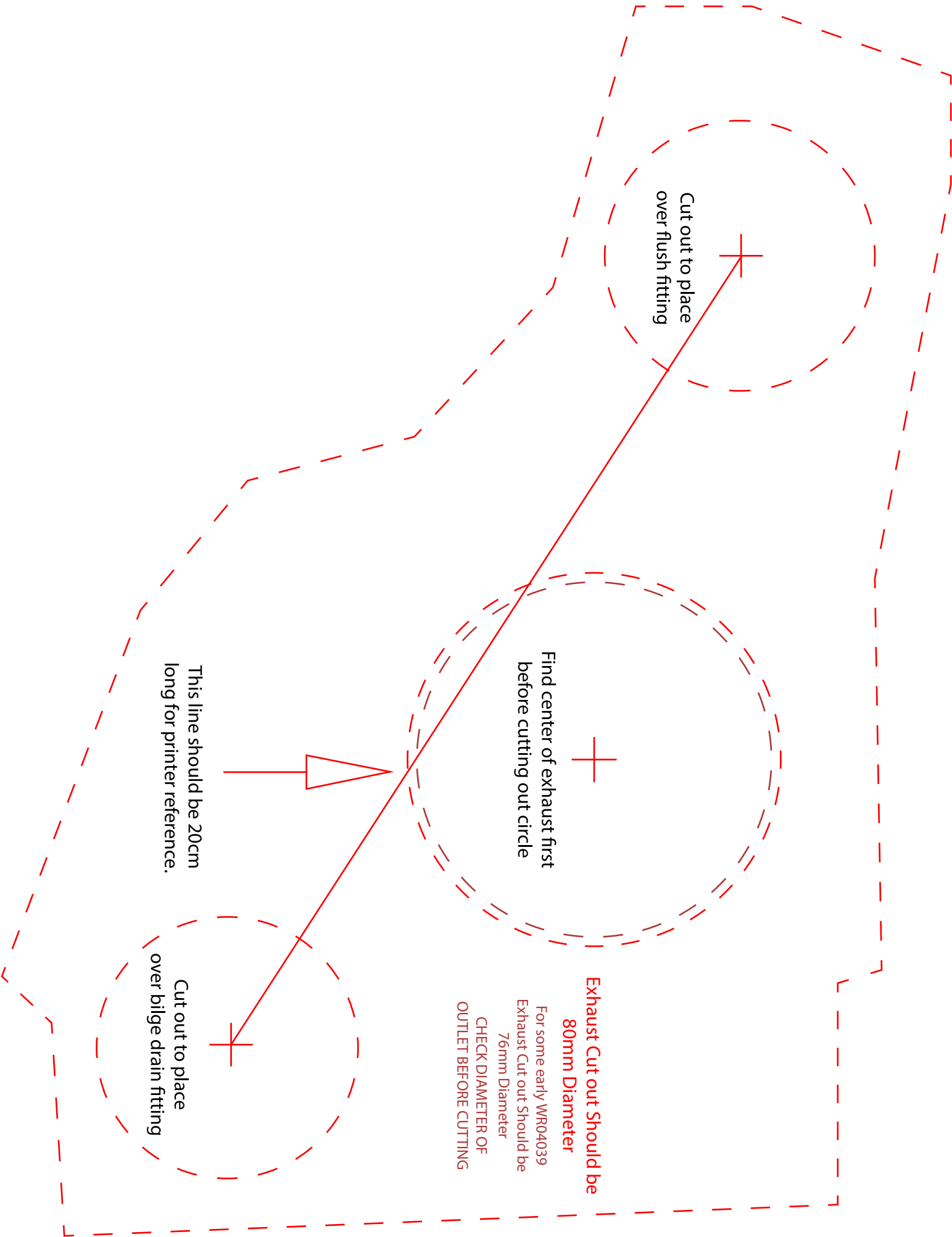
IMPORTANT: READ ALL INSTRUCTIONS BEFORE PROCEEDING WITH INSTALLATION

- 1- Make sure ski is secure and on a flat surface. Remove lanyard and disconnect battery.
- 2- Remove OEM cross over hose from water box to sound baffle. Retain OEM clamps.
- 3- Remove sound suppression baffle but leave the elbow hose connected to thru hull fitting. Discard baffle. Retain OEM clamp. Note baffle is secured at front by 10mm screw or rivet that need to be removed before baffle can be extracted.
- 4- Insert the exhaust block off into the factory hose for the through hull fitting and secure with the factory clamp
- 5- Fit cut out template onto right side of hull and mark center of hole. Remove template and drill hole for outlet using 2 ¾ inch / 70mm hole saw bit. Install WORX billet outlet into hole and mark and drill all 6 holes. Remove out let and clean all dust and debris. Run a bead of marine silicone around inner edge of the outlets and secure into place with supplied M6 bolts and retaining ring. Tighten bolts in number order a few turns at a time so the securing ring pulls up evenly on the inside of the hull. **DO NOT over tighten bolts.** Clear away and excess silicone.
- 6- Install WORX Silicone hose to outlet and waterbox and secure with OEM clamps. **DO NOT overtighten clamps.**
- 7- Ziptie clear bilge tubes back onto high crossover part of exhaust.
- 8- Check ski for tools etc. Re connect battery and run on flush hose to check for leaks.

Thank you for purchasing **Worx Racing components** products. We firmly believe that **Worx Racing Components** products are among the finest watercraft parts available. A great deal of time and effort has gone into the design and development of this product to ensure that it will perform to the highest standard and that installation is a relatively straight forward and simple procedure. If you have any questions or comments on the performance and/or installation of our products please contact us at the numbers listed on page one or through your local **Worx** dealer.

www.worx.com.au / info@worx.com.au





Cut out to place
over flush fitting

Find center of exhaust first
before cutting out circle

This line should be 20cm
long for printer reference.

Cut out to place
over bilge drain fitting

**Exhaust Cut out Should be
80mm Diameter**
For some early WR04039
Exhaust Cut out Should be
76mm Diameter
**CHECK DIAMETER OF
OUTLET BEFORE CUTTING**